

To μ Data Centers

Schneider Electric

Schneider Electric, μ portal Biztech.gr, μ Data Centers

μ , μ

μ online μ 23-30 2014.
156 :

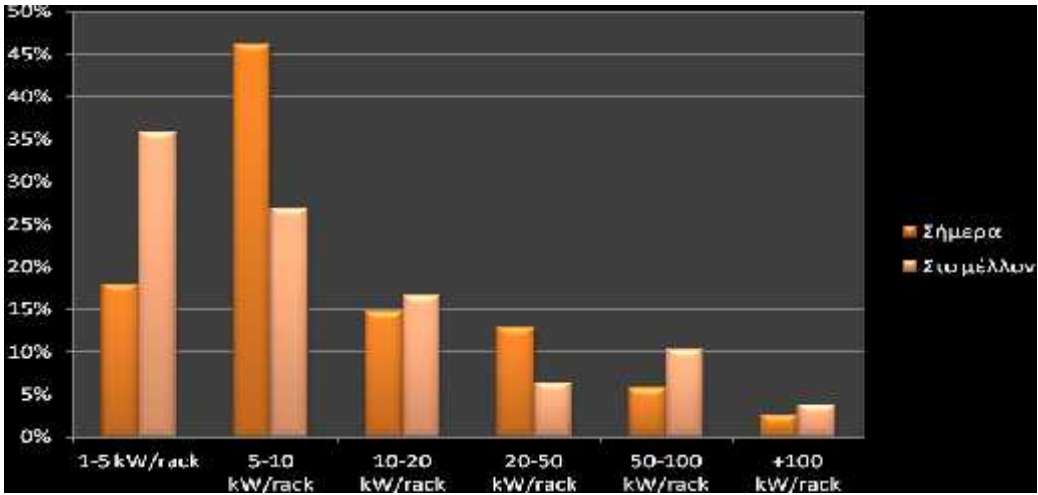
- 78% (CIOs, CTOs, IT managers)
- 17% (μ , . .)
- 5% (project managers, μ)

μ (9%), μ (12%), μ (7%), μ (11%), μ (12%), μ (17%) . . μ 250 .

μ
1)

Data Centers, μ IT managers (46%)
1-5 kW/rack, 15% μ 10-20 kW/rack, 5-10 kW/rack, 18% μ
20 kW/rack.

μ μ racks μ CIOs
μ racks Data Center.



μ (kWh/m²). 57% μ , μ 51% CIOs μ , 2 μ 3 μ (42%).

2) μ μ , μ μ (μ , μ , μ . . .) μ μ μ μ 4 50 μ 100 μ μ 1 (21% μ 22%) 200 μ 500 μ .

